



Building Quality Homes for Gladstone...

Artists impression only

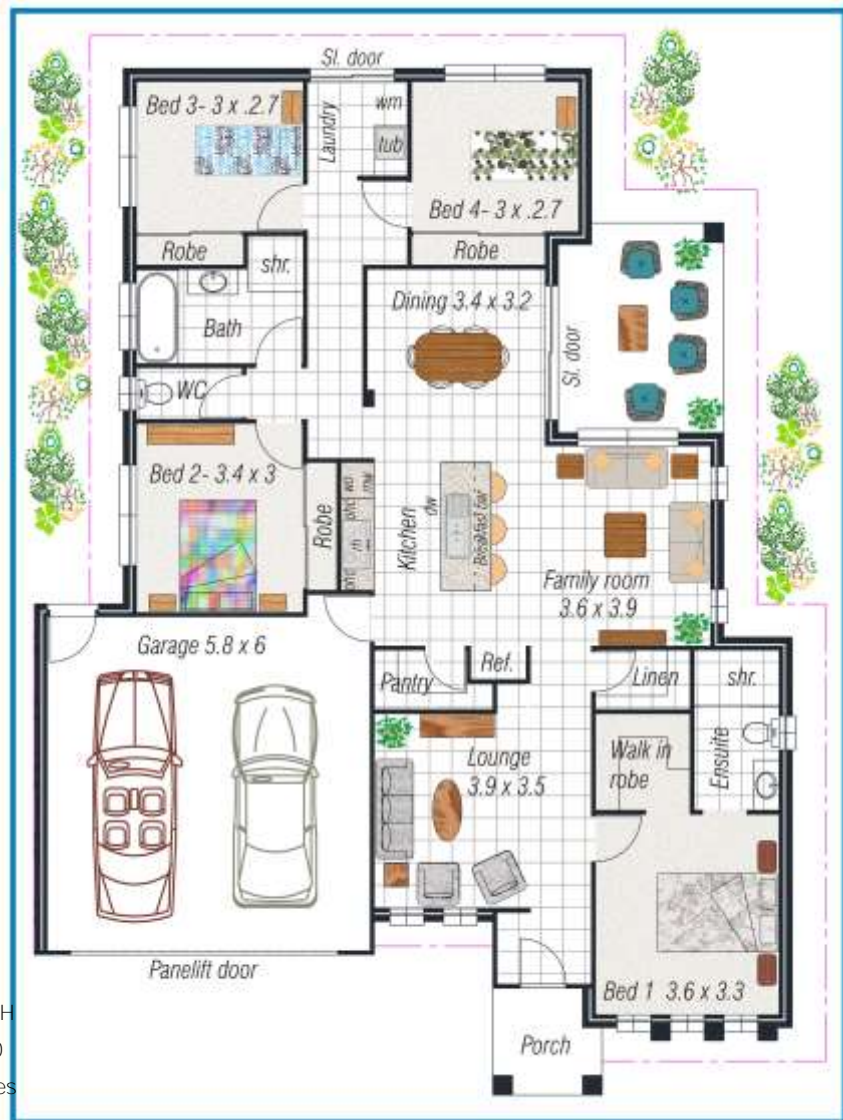
The Tropical 190m²

HOUSE FEATURES

- 4 BEDROOMS
- LARGE WALK IN ROBE
- DESIGNER KITCHEN
- WALK IN PANTRY
- LARGE ALFRESCO
- POWDER ROOM
- WEATHERBOARD
- FACADE FEATURES
- LARGE LINEN STORAGE

INCLUSION

- DRIVEWAY
- EUROMAID APPLIANCES
- CLOTHESLINE
- FLY SCREENS THRUOUT
- COLOUR SELECTIONS*
- ENSUITE VANITIES
- CUSTOM LAUNDRY CABINET



**HOUSE & LAND
PACKAGES AVAILABLE**

Ph 07 4978 7335 email tenhomes@outlook.com
 Visit our office for information on building your next dream home...
 7c Helen St, Callemondah Gladstone
www.tenheggelerhomes.com.au
 QBCC-1024727

**VISIT OUR DISPLAY HOME OPEN AT:
54 CREEKVIEW DRIVE FOREST SPRINGS**

WIDTH x DEPTH
14200 x 19030
Inclusive of eaves

TENHEGgeler BUILDING COMPANY PTY LTD TRADING AS

TENHEGgeler HOMES



*Elegance
Style
Quality*

Copyright of this plan belongs to Tenheggeler Homes*. Prices & Inclusions subject to change at anytime without notice. *Inclusions match the designer inclusions list.