



*Building Quality Homes for Gladstone...*

Artists impression only

# Alexia 227m<sub>2</sub>

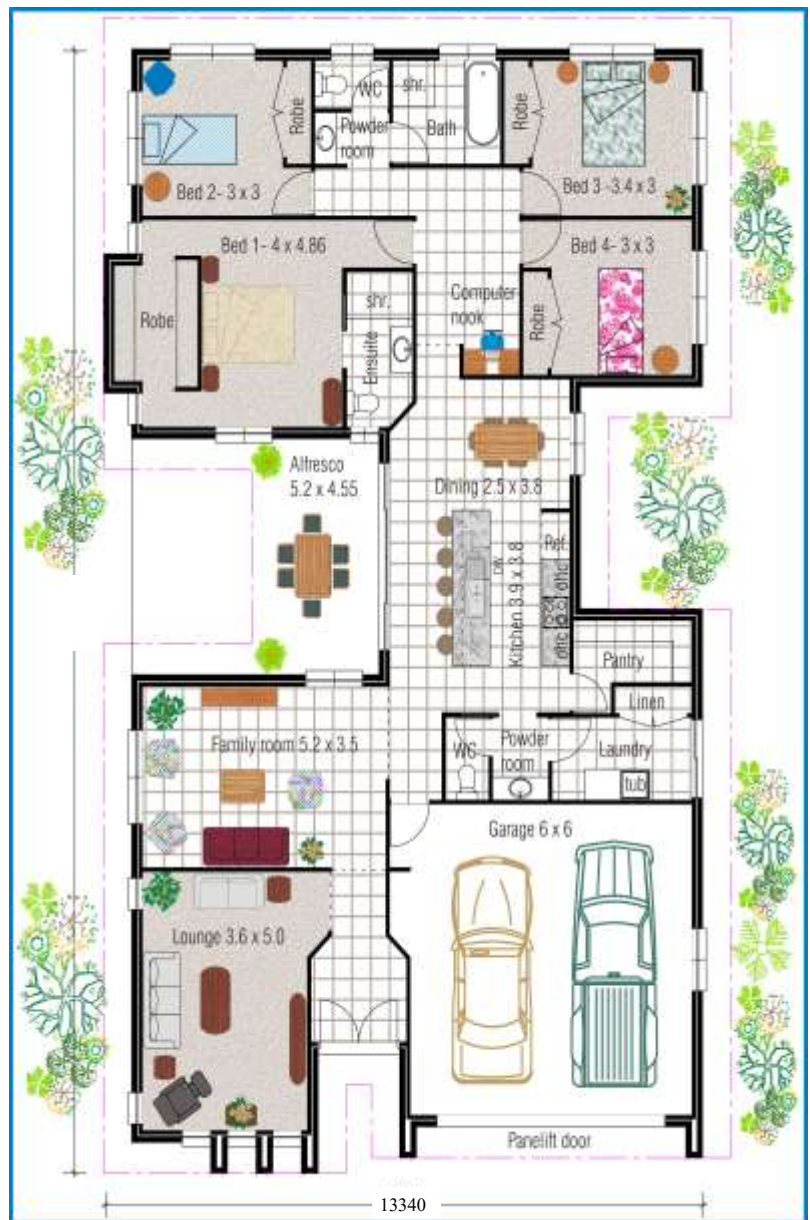
Hip and Valley

## HOUSE FEATURES

- 4 BEDROOMS
- LARGE MASTER BED WITH WALK THROUGH ROBE
- LARGE ISLAND BENCH
- CUSTOM BUILT KITCHEN
- LARGE WALK IN PANTRY
- SPACIOUS ALFRESCO
- 2 POWDER ROOMS
- SEPARATE LOUNGE
- DUAL DOOR ENTRANCE
- STUDY NOOK

## INCLUSION

- DRIVEWAY & TURF\*
- FENCING\*
- EUROMAID PACKAGE INCLUDING DISHWASHER
- AIRCONDITIONING
- LETTERBOX
- WALL HUNG CLOTHESLINE
- SECURITY SCREENS
- FULL COLOUR
- CONSULTANCY PACKAGE
- SEPARATE LOUNGE



HOUSE & LAND  
PACKAGES AVAILABLE

Ph 07 4978 7335 email [tenhomes@outlook.com](mailto:tenhomes@outlook.com)  
 Visit our office for information on building your next dream home...  
 7c Helen St, Callemondah Gladstone  
[www.tenheggelerhomes.com.au](http://www.tenheggelerhomes.com.au)  
 QBCC-1024727

VISIT OUR DISPLAY HOME OPEN AT:  
**54 CREEKVIEW DRIVE FOREST SPRINGS**

WIDTH x DEPTH  
 13340 x 22270  
 Inclusive of Eaves

TENHEGgeler BUILDING COMPANY PTY LTD TRADING AS

# TENHEGgeler HOMES



*Elegance  
Style  
Quality*

Copyright of this plan belongs to Tenheggeler Homes\*. Prices & Inclusions subject to change at anytime without notice. \*Inclusions match the designer inclusions list.