



*Building Quality Homes for Gladstone...*

Artists impression only

# Lamont 190m<sup>2</sup>

GABLE ROOF

## INCLUSION

- DRIVEWAY & TURF\*
- FENCING & GARDEN\*
- LETTERBOX & CLOTHESLINE
- SECURITY SCREENS
- AIRCONDITIONING
- FULL COLOUR CONSULTANCY
- EUROMAID APPLIANCE
- PACKAGE INC DISHWASHER
- LARGE ENSUITE SHOWER
- OPEN PLAN LIVING

## HOUSE FEATURES

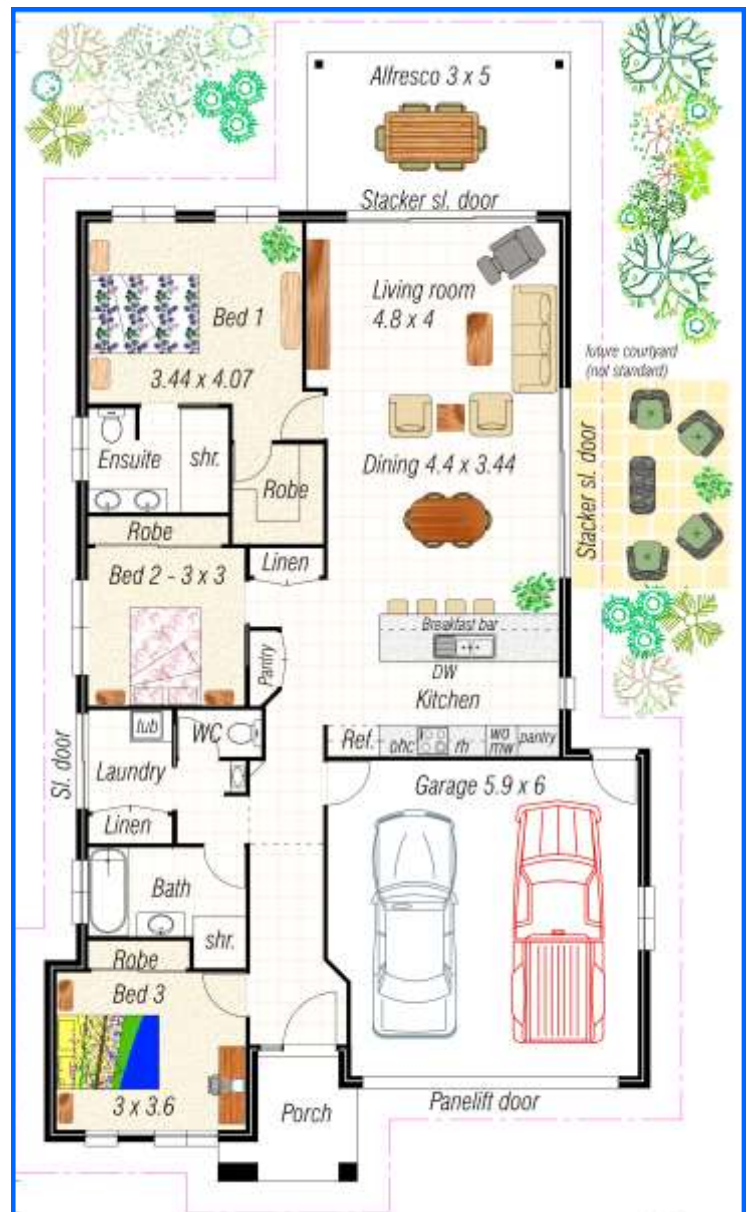
- 3 BEDROOMS OR STUDY
- LARGE WALK IN ROBE
- HIS & HERS VANITIES
- CUSTOM MADE KITCHEN
- LARGE ALFRESCO
- LINEN STORAGE
- SEPARATE POWDER ROOM
- STONE\* FACADE FEATURES
- EXPOSED AGG DRIVEWAY
- MULTIPLE PANTRY SPACE

HOUSE & LAND PACKAGES  
AVAILABLE

Ph 07 4978 7335 email [tenhomes@outlook.com](mailto:tenhomes@outlook.com)  
 Visit our office for information on building your next dream home...  
 7c Helen St, Callemondah Gladstone  
[www.tenheggelerhomes.com.au](http://www.tenheggelerhomes.com.au)  
 QBCC-1024727

VISIT OUR DISPLAY HOME OPEN AT:  
 54 CREEKVIEW DRIVE FOREST SPRINGS

WIDTH x DEPTH  
 12680 x 22620  
 Inclusive of eaves



TENHEGgeler BUILDING COMPANY PTY LTD TRADING AS

# TENHEGgeler HOMES



*Elegance  
 Style  
 Quality*

Copyright of this plan belongs to Tenheggeler Homes\*. Prices & Inclusions subject to change at anytime without notice. \*Inclusions match the designer inclusions list.