



Building Quality Homes for Gladstone...

Artists impression only

The Tropical 190m² — hip & valley

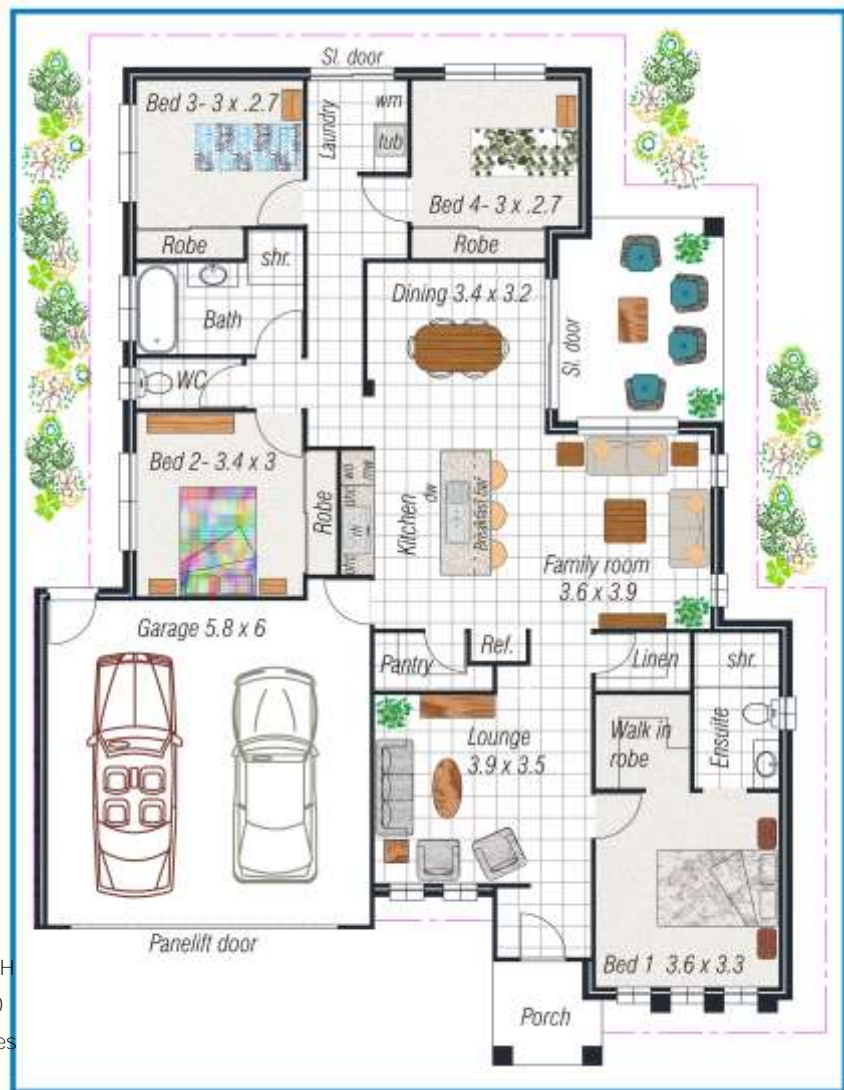
INCLUSION

- AGG DRIVEWAY & TURF*
- FENCING & GARDEN*
- LETTERBOX & CLOTHESLINE
- MIRROR ROBES
- AIRCONDITIONING
- CUSTOM DESIGNED KITCHEN
- STAINLESS STEEL APPLI-
ANCE PACKAGE INC DISH-
WASHER

HOUSE FEATURES

- 4 LARGE BEDROOMS
- LARGE ENSUITE
- WALK IN ROBE
- CUSTOM MADE KITCHEN
- WALK IN PANTRY
- LINEN STORAGE
- INTERNAL LAUNDRY
- TILE* FACADE FEATURES
- DOUBLE LOCKUP GARAGE

HOUSE - 190m² \$ 241'300
 LAND—Lot 130 \$ 165'000
TOTAL PACKAGE \$ 406'300



Ph 07 4978 7335 email tenhomes@outlook.com
 Visit our office for information on building your next dream home...
 7c Helen St, Callemondah Gladstone
www.tenheggelerhomes.com.au
 QBCC-1024727

VISIT OUR DISPLAY HOME OPEN AT:
4 PARKWAY CRESCENT FOREST SPRINGS

WIDTH x DEPTH
 14200 x 19030
 Inclusive of eaves

TENHEGgeler BUILDING COMPANY PTY LTD TRADING AS

TENHEGgeler HOMES



*Elegance
Style
Quality*

Copyright of this plan belongs to Tenheggeler Homes*. Prices & Inclusions subject to change at anytime without notice. *Inclusions match the designer inclusions list.